

WOUD



the 2023 collection

TACT RUG designed by Shazeen Ansari
NAKKI 1-SEATER designed by Mika Tolvanen
CONO FLOOR LAMP designed by Benny Frandsen
JEU DE DÉS CANDLE HOLDERS designed by Oleg Pugachev
PIDESTALL PLANTER designed by Emilie Stahl Carlsen
BRICKS MODULAR STORAGE SYSTEM designed by Ditte
Vad and Julie Begtrup



A SENSE OF BELONGING

Home. The centre of our lives. Our domestic oasis. Our personal hide-away. Our breathing space, where we retreat to relax and recharge from the outside world. The home is the place where we create memories with our loved ones and gather all the things we cherish, creating a sense of harmony and tranquillity around us. The feeling of home can be complex to put into words, but once you experience it, the feeling is instantly recognisable. It is a genuine sense of belonging that serves as a source of calm.

Acknowledging the value of our home, the importance of creating a comfortable yet functional base has become quite distinct. As we have spent more time at home, we have become more conscious of its impact on our well-being, developing a greater appreciation for creating a warm and welcoming atmosphere. Our spaces have become more than just a place to live; they function as a hub for education, work and leisure time.

Every home possesses its endearing characteristics, reflecting our personality and distinctive taste. It is something special. Meaningfulness and sensory perceptions are created through the combination of the colours and materials we choose to the lighting and ambience we create, where every detail serves a purpose and holds meaning. It is a place where we can be ourselves, unwind and recharge.

The home is the place we get together with our loved ones - and finally, we can open our homes once again. Share our personal universe, invite people in and celebrate. Founding WOUD, we wanted to contribute to creating homely surroundings for these moments. We do our utmost to form core designs for the centre of our lives. As we open up our homes and hearts, we invite you to join our universe. Welcome - we can not wait to show you around.

Mia Koed, Creative Director at WOUD

A handwritten signature in black ink, appearing to read 'Mia Koed', with a stylized, cursive script.



TABL SIDE TABLE designed by Roel Vandebek
COLLAR 2.5-SEATER designed by Meike Harde
MOUNTAIN MAGAZINE HOLDER designed by Tina Schmidt



BRICKS MODULAR STORAGE SYSTEM

Designed by Ditte Vad and Julie Begtrup

Ditte Vad and Julie Begtrup are a Danish design duo and the designers behind the Bricks cubes series. The storage system is characterised by its refined lines and simplistic construction. Emphasising Scandinavian design traditions through fine craftsmanship and minimalistic aesthetics.

Every modular brick is made out of five oak boards. The different levels of the boards make it possible to stack the Bricks on top of each other, creating a self-locking construction that encourages the creation of a personal arrangement. Build it brick by brick and create a changeable storage setting, a room divider, a wall-mounted bookcase, a side table or a display for objects. Adding a floor base to Bricks creates an elegant, airy expression that will complete the visual aesthetics of the storage setting.

The multifunctional aspect reflects the original source of inspiration for the cubes. Bricks were designed to solve the designers' desire to have a changeable storage system to showcase carefully chosen objects but also to hide away the mess that often occurs in everyday life.



GHOST TABLE LAMP designed by Studio Kowalewski
AROUND WALL HANGERS designed by 201-Design Studio
BRICKS MODULAR STORAGE SYSTEM designed by Ditte Vad
and Julie Begtrup



ARKIV BOOKEND designed by Ella Shegai
GHOST PENDANTS designed by Studio Kowalewski
BOOKND BOOKENDS designed by Roel Vandebeek
MOUNTAIN PAPERWEIGHT designed by Tina Schmidt
SENTRUM SIDE TABLE designed by Schmahl+Schnippering
JEU DE DÈS CANDLE HOLDERS designed by Oleg Pugachev
BRICKS MODULAR STORAGE SYSTEM designed by Ditte Vad
and Julie Begtrup





KYOTO RUG designed by AD Miller
ANNULAR PENDANT designed by MSDS Studio
SOMA DINING CHAIRS designed by Kasper Nyman
LUDO DINING TABLE designed by Steffensen & Würtz

LUDO DINING TABLE

Designed by Steffensen & Würtz

Ludo is a visually strong pillar dining table that embodies the beauty of simplicity and balance. Inspired by the concept of pure geometric shapes, its convex and concave forms harmoniously converge in a pedestal base. Evoking a sense of nostalgia reminiscent of the classic Ludo piece.

The stringent and minimalistic shape immediately draws the eye while it creates a focal point that adds a touch of modern sophistication. Showcasing an artistic look. Seamlessly blending function and aesthetics, the wooden round top and centred base provide ample legroom and easy accommodation for additional guests. Forming an inviting setting for meaningful conversations and cosy, inclusive dinners, where everyone at the table can easily engage with one another.

The Ludo dining table is available with a white pigmented lacquered oak top splendid for Nordic-inspired spaces or a rich matt lacquered walnut top that will bring warmth and sophistication to the atmosphere.



KYOTO RUG designed by AD Miller
SOMA DINING CHAIRS designed by Kasper Nyman
LUDO DINING TABLE designed by Steffensen & Würtz



ANNULAR PENDANTS designed by MSDS Studio
SLALOM STEP STOOL designed by Studio DeJawu
PIDESTALL PLANTER designed by Emilie Stahl Carlsen



KYOTO RUG designed by AD Miller
SOMA DINING CHAIRS designed by Kasper Nyman
LUDO DINING TABLE designed by Steffensen & Würtz

SOMA DINING CHAIR

Designed by Kasper Nyman

Designed with attention to the essentials and an appreciation of the material, the Soma dining chair brings a timeless presence and softness to any contemporary space. The sleek lines of the seat and back are comfortably embraced by the roundness of the legs and the elegant joints. Forming harmonious proportions.

Created using traditional techniques, the design of Soma is rooted in the classic Scandinavian design heritage with a new interpretation of sophistication and simplicity. Its name "Soma" is derived from the Finnish word for adorable and lovely, perfectly encapsulating the charm and warmth of the design.

The Soma dining chair is available in different finishes, with and without a fixed upholstered leather seat.



KYOTO RUG designed by AD Miller
COLLAR 2-SEATER designed by Meike Harde
GHOST TABLE LAMP designed by Studio Kowalewski
PIDESTALL PLANTERS designed by Emilie Stahl Carlsen



KYOTO RUG designed by AD Miller
ANNULAR PENDANT designed by MSDS Studio
SOMA DINING CHAIRS designed by Kasper Nyman
LUDO DINING TABLE designed by Steffensen & Würtz



KYOTO RUG designed by AD Miller
PUMP TABLE LAMP designed by KUTARQ Studio
BRICKS MODULAR STORAGE SYSTEM designed by Ditta Vad and Julie Begtrup

KYOTO RUG

Designed by AD Miller

With our autumn-winter 2023 collection, we launch an oval and two round versions of the hand-tufted wool rug, Kyoto. The new rounded shapes exude a feeling of stillness and balance and are ideal under a round dining table or in front of the sofa.

As the name reveals, Kyoto is designed in the sphere of Japanese aesthetics and Scandinavian design, communicating a shared simplicity and honesty. Crafted with a focus on tactility, the thick tufted rug ensures a comfy thread that makes you feel grounded. A feeling that represents the source of inspiration for the rug.

The design takes its inspiration from the distinctive pattern found in traditional raked Japanese rock gardens. These aesthetic havens are meticulously designed to evoke a profound sense of serenity and inner calm, encapsulating the essence of nature and minimalism. A state of mind that designer, AD Miller, aspired to embody in his design of the Kyoto rug.

The rug comes in different sizes and shapes, each with an individual design. Available in natural tones, Kyoto provides a complementing base for a furniture setting while also bringing a sense of the textured landscape inside. Creating a tranquil and harmonious oasis that encourages contemplation, mindfulness and an appreciation for the simple yet profound beauty of nature.



SOMA DINING CHAIR designed by Kasper Nyman



MOUNTAIN MAGAZINE HOLDER designed by Tina Schmidt



SLALOM STEP STOOL designed by Studio Dejavu

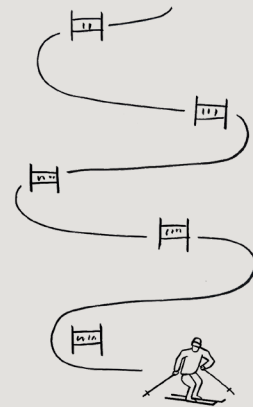
SLALOM STEP STOOL

Designed by Studio Dejawu

Imagine standing at the top of the ski slopes, taking in the breathtaking view as you observe the artistry of the slalom tracks carved gracefully into the snow. Each imprint and turn creates a stunning display of motion and precision, leaving behind elegant arcs.

The ski's edges' interaction with the snow found in the white landscapes of northern Sweden inspired designer Qian Jiang from Studio Dejawu to draw the silhouette of the Slalom step stool. Capturing the dynamics of sinuous slalom traces, the Slalom step stool is beautifully shaped by smoothly bent metal legs that embrace solid oak planks. Its minimalist form combines the sturdiness of the frame with the softness of the steps, bringing comfort and reliability to the design.

Slalom seamlessly blends form and function. With its portable nature, it effortlessly serves as an assistant for reaching the top shelves in the wardrobe, a companion for children in the kitchen or a convenient side table by the bed.



ANNULAR PENDANT

Designed by MSDS studio

We welcome our newest member to the Annular family. A soft and muted hue that exudes a sense of comfort, calmness and elegance - beige. Selected because of its timelessness, versatility and its ability to complement other colours while creating a soothing and inviting atmosphere.

Not only is the series extended with a new colour, but it also represents a deliberate step in our conscious and purposeful journey towards a more responsible product line. We have relaunched and enhanced the WOOD classic's functionality. The integrated LED strip is now replaceable and can be changed just like a light bulb, extending the lifetime of the design as much as possible.

Annular is a contemporary pendant characterised by its innovative use of LED, yet designed with a clean silhouette to stay relevant and appealing when trends change. It interprets the classic cone pendant in a modern way, redefining traditional lighting with an artistic touch.

With an artful fusion of two elemental and primary forms, the Annular pendant captivates with its conical shade symmetrically paired with a perfect ring of light at the perimeter. The ring-shaped light source is boldly graphic and resolutely sophisticated. A detail that cleverly covers the light source. Resulting in a seamless and clean expression while lending a pleasant and coherent light to the pendant.





GHOST PENDANT designed by Studio Kowalewski
MOUNTAIN PAPERWEIGHT designed by Tina Schmidt
MONO COUNTER CHAIR designed by Kasper Nyman
AROUND WALL HANGERS designed by 201 Design Studio



ANNULAR PENDANT designed by MSDS Studio

AROUND HOOKS

Designed by 201 Design Studio

Simple yet graphic, the Around wall hangers combine sophisticated aesthetics and functionality. Designed with the intention of creating an elegant and practical product, that will stay decorative even when in use. Understated and beautiful.

The wooden concave surface brings a sculptural detail to the design while adding warmth and balance to the sturdy metal hook. Materials that are contrasting and complementary at the same time.

The Around wall hangers are available in two sizes and three colours that can easily be combined and styled in harmonious, clean or artistic compositions on the wall. Choose between a black or satin brass metal hook for all finishes.

Founded by Mira Ene and Codrin Stanciulescu, the Romanian 201Design Studio operates in the field of furniture, lighting and accessories design. The studio is characterised by designing meaningful and honest products that distinguish themselves through functionality, interactivity and attention to detail.



AROUND WALL HANGERS designed by 201 Design Studio
PIDESTALL PLANTER designed by Emilie Stahl Carlsen



AROUND WALL HANGERS designed by 201 Design Studio
JEU DE DÈS CANDLE HOLDERS designed by Oleg Pugachev





MOUNTAIN PAPERWEIGHT designed by Tina Schmidt

MONOLITH INCENSE HOLDER

Designed by Oleg Pugachev

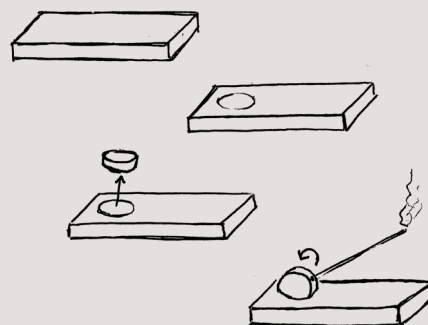
With the launch of the Monolith incense holder, we commemorate a significant milestone in our design journey. As the very first winner of the HIDN Design Award 2023, Monolith, designed by the Berlin-based Oleg Pugachev, showcases our commitment to nurturing creativity and innovation within the realm of design. It embodies the values of aesthetic refinement, ingenuity and a harmonious fusion of form and functional prowess, encapsulating the essence of design that resonates with the philosophy of the HIDN design concept.

Monolith invites you to immerse yourself in a world where design converges with contemporary relevance, where products possess sensuous aspects, and where functionality embraces the modern way of life, focusing on relaxation, quiet contemplation and well-being.

Made from a solid rectangular block of marble, the incense holder embraces these emotions while emphasising production and material optimisation. Its clean and precise geometry creates a stunning visual contrast, offering a sophisticated moment of tranquillity.

The cylindrical holder is directly cut from the block, leaving a hollow centre to vertically place the cut marble piece. Drilled holes of varying diameters around the perimeter offer versatility, accommodating different types of incense sticks with ease, including Indian sticks with a bamboo core, as well as Japanese and Tibetan sticks without a core.

Clever use of counterweight and friction holds the incense sticks at the perfect angle to ensure ashes from longer sticks do not miss the plate. Furthermore, the horizontal platform provides an obvious space for burning incense cones or a piece of lava rock, which serves as an essential oil diffuser.







HIDN DESIGN CONCEPT

In close cooperation with Roel Vandebeek

In the early summer of 2022, we proudly launched a new, creative and innovative design concept; The HIDN Design Language. Intended to inspire and motivate design minds in the process where a design comes to life. To us, it is a way of bringing focus to a responsible approach to designing.

HIDN is a way of designing to add purposeful, obvious functionality, aesthetics or value to a design without adding obvious material. It is all about the hidden things you see and do not see around you. It is a constant exploration and a search for the hidden possibilities in material or processing to reveal a hidden shape, function, idea, efficiency, emotion or design feature. They are the hidden treasures you unexpectedly discover while designing.

Approaching the design process with the HIDN concept, you look at products in a new way. Think of it as a natural step in the table of content for every line drawn and idea thought. Pushing the boundaries of the common use and reuse of waste,

the fundamental principle comprises utilising and optimising material and resources at the beginning of a process and not after the production phase.

This essential principle is considered pre-cycling. A guideline for the HIDN design language. With a pre-cycling approach, you actively take initiative before the production phase, before the materials actually become waste. You optimise the materials and processing at an early stage while thoughtfully revealing the hidden possibilities. A cornerstone in waste reduction and a fundamental element of the HIDN design language.

We want to share the HIDN way of thinking with students and design enthusiasts across industries in the design world. It makes beautiful sense to us to cherish the creative students and upcoming design talents by welcoming their new thoughts and inventive views on future design. To stay true to our founding vision of establishing a design collective of newcomers to give something back.

TABL SIDE TABLE

Designed by Roel Vandebeek

This season we launch the second design in our HIDN Collection. The graphic metal side table, TABL. Designed from the idea of optimising material by providing the design with a new function without adding additional material, TABL illustrates a fundamental pillar in the HIDN Design Concept.

A circular part of the classic cylindrical base has been cut out and transformed into a functional table-top. Consequently creating a round, open space in the foundation for storing books, throws or creative pursuits. With this playful and tangible approach, we effectively optimise the manufacturing process by recessing the base and top simultaneously. Making the shapes from the opening and the top recur.

Distinctive and stringent, the contemporary silhouette will suit various arrangements.

With his creative mind, Roel Vandebeek is the driving force behind the HIDN concept and designer of TABL. Humour, user-centred design, tactility, efficiency, thoughtfulness and simplicity with a touch of originality - these are some of the aspects that reflect the work of the experienced Belgian designer and artist. He highly values engendering interaction through design and encourages entering a dialogue.

Since the very beginning of his career, he has explored various spectrums within art, industrial design and interior design. This holistic view of design projects has led Roel to establish the creative hotspot Dêpot des Arts. This constellation allows him to commence and delve into projects with uncompromising possibilities and wholeheartedly solve design cases.



NAKKI LOBBY TABLE designed by Mika Tolvanen
NAKKI LOBBY MODULES designed by Mika Tolvanen





CONO WALL LAMP designed by Benny Frandsen



BOOKND BOOKENDS designed by Roel Vandebeek



STUDY TABLE LAMP designed by MSDS Studio
FRAME DINING CHAIR designed by Mario Tsai
ELEVATE SHELVING SYSTEM designed by Camilla Akersveen and Christopher Konings

CONO FLOOR LAMP designed by Benny Frandsen
NAKKI 1-SEATERS designed by Mika Tolvanen
ARC COFFEE TABLE designed by Ditte Vad and Julie Begtrup





JEU DE D S CANDLE HOLDERS designed by Oleg Pugachev



ARKIV BOOKEND designed by Ella Shegai
HIBO HIPPOPOTAMUS designed by Steffen Juul
STEDGE SHELVES designed by Leonard Aldenhoff



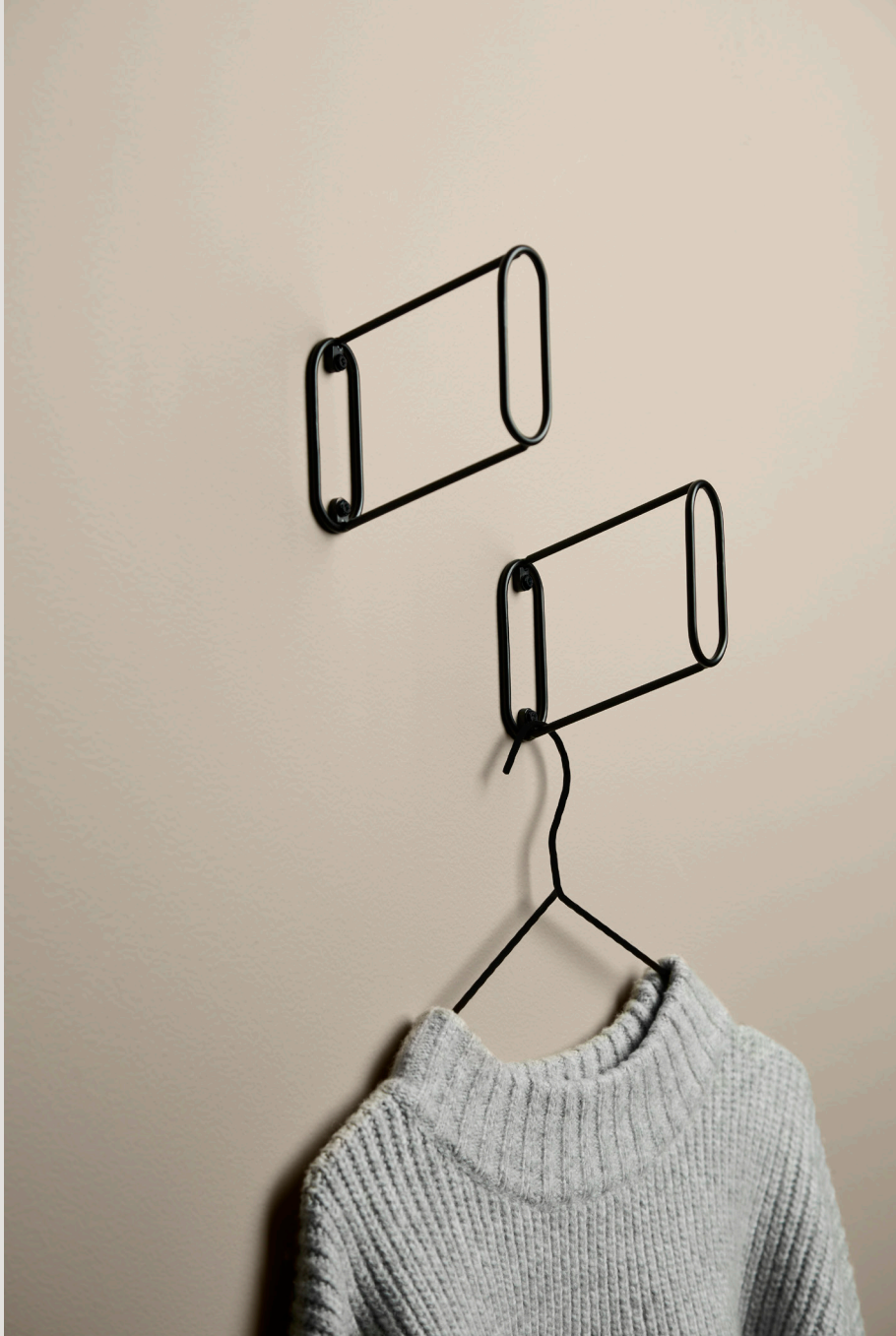
ARKIV BOOKEND designed by Ella Shegai
UTILITY SHELF designed by Racheal Heritage
HOOP RACK designed by Jeanette Holdgaard

STONE PENDANT designed by Philip Bro
ILLUSION HANGERS designed by Philip Bro
TÖJBOX WARDROBE designed by Made by Michael
PIDESTALL PLANTER designed by Emilie Stahl Carlsen





ARKIV BOOKEND designed by Ella Shegai
CONO TABLE LAMP designed by Benny Frandsen
RINA RHINOCEROS designed by Steffen Juul
VIRKA SIDEBOARD designed by MOAKK and Røpke Design



EILEEN HOOKS designed by Gustav Rosén



KYOTO RUG designed by AD Miller
ILLUSION HANGERS designed by Philip Bro
O&O RACKS designed by Christine Rathmann

O&O RACKS designed by Christine Rathmann
ILLUSION HANGERS designed by Philip Bro





MONO COUNTER CHAIR designed by Kasper Nyman
STEDGE SHELVES designed by Leonard Aldenhoff
HIBO HIPPOPOTAMUS designed by Steffen Juul

THE FEEL OF HOME

Every home expresses a personality. Every home evokes distinct feelings. With its own history and heart, a home tells a story. Before you move in, it is just a place, an apartment, a house. But once you decorate the space with your carefully curated furniture and interior, it suddenly transforms into a home. Your home. Thoughtfully selected to create the most suitable surroundings for you and your family, your unique composition of furniture reveals a special atmosphere. Providing inspiring and intimate spaces, where you can relax, feel safe, and escape the complexities of the outside world.

By implementing portraits, antiques and travel souvenirs, you evoke memories, tell stories and personalise the spaces. When letting new furniture into your home, you start a new chapter in your home's story, as each design interacts differently with its surroundings and transforms depending on the room. Whether it is small or spacious, bright and inviting or dim and enclosing. Making every piece its very own. Over time, the design becomes a natural part of your home, leaving the space incomplete without it.







KYOTO RUG designed by AD Miller
ARKIV BOOKEND designed by Ella Shegai
TANGENT TABLE LAMP designed by Frederik Kurzweg



FRAME DINING CHAIR designed by Mario Tsai
TREE DINING TABLE designed by Elisabeth Hertzfeld

ANNULAR PENDANT designed by MSDS Studio
FRAME DINING CHAIRS designed by Mario Tsai
TREE DINING TABLE designed by Elisabeth Hertzfeld
PIDESTALL PLANTER designed by Emilie Stahl Carlsen





ARRAY SIDEBOARD designed by Says Who
PUMP TABLE LAMP designed by KUTARQ Studio



TACT RUG designed by Shazeen Ansari
VERDE COFFEE TABLE designed by Rikke Frost

CONO TABLE LAMP designed by Benny Frandsen
MONO COUNTER CHAIR designed by Kasper Nyman
TREE CONSOLE TABLE designed by Elisabeth Hertzfeld





TANGENT TABLE LAMPS designed by Frederik Kurzweg



TACT RUG designed by Shazeen Ansari
ARKIV BOOKEND designed by Ella Shegai
BRICKS MODULAR STORAGE SYSTEM designed by Ditte Vad and Julie Begtrup



TACT RUG designed by Shazeen Ansari
ARKIV BOOKEND designed by Ella Shegai
NAKKI 1-SEATER designed by Mika Tolvanen
LA TERRA COFFEE TABLE designed by Agnes Morguet
GHOST FLOOR LAMP designed by Studio Kowalewski



TACT RUG designed by Shazeen Ansari
ARKIV BOOKEND designed by Ella Shegai
PUMP TABLE LAMP designed by KUTARQ Studio
BRICKS MODULAR STORAGE SYSTEM designed by Ditte Vad and Julie Begtrup

TACT RUGS

Designed by Shazeen Ansari

Say hello to our Tact rug in two new hues: Anthracite grey and brown. These additions to the colour options offer enhanced versatility and give the opportunity to select a rug that complements the current interior design and aligns seamlessly with your personal preferences.

Whether you favour sleek, modern tones or the comforting warmth of earthy shades, the new colours enhance the rug's appeal and ability to harmonise with diverse aesthetics. The anthracite grey lends a sophisticated and contemporary feel to the wool rug, while the brown colour embraces the essence of nature and brings an inviting atmosphere to any room.

With a surface characterised by small circular droplets, the Tact rug invites you to feel its tactile texture and explore the stimulating surface. Providing a sensuous tread, Tact contributes to a pleasant ambience and enhances the indoor, cosy domesticity. With its soft surface and sound-reducing effect, the contemporary rug pleases the senses, offering a soothing atmosphere.

Crafted from natural materials, slight variations in colour may occur, emphasising its organic and pure, artisanal essence.

MERCURY WALL LAMP designed by Jeanette Holdgaard
VIRKA SIDEBORD designed by MOAKK and Røpke Design





ARC SIDE AND COFFEE TABLES designed by Ditte Vad and Julie Begtrup
SOROUND COFFEE TABLE designed by NUR Design
TACT RUG designed by Shazeen Ansari



DEW TABLE / WALL LAMP designed by Saif Faisal

DOUBLE THROW designed by Studio MLR
CONO FLOOR LAMP designed by Benny Frandsen
COLLAR 2-SEATER designed by Meike Harde





GHOST PENDANTS designed by Studio Kowalewski



GHOST TABLE LAMP designed by Studio Kowalewski



ARKIV BOOKEND designed by Ella Shegai
STEDGE SHELVES designed by Leonard Aldenhoff
LEAN LOUNGE CHAIR designed by NUR Design

ROMBO RUG designed by Studio MLR
PUMP PENDANT designed by KUTARQ Studio
LEVEL DAYBED designed by MSDS Studio



DEW TABLE/WALL LAMP designed by Saif Faisal
PIDESTALL PLANTER designed by Emilie Stahl Carlsen
JEU DE DÈS CANDLE HOLDERS designed by Oleg Pugachev
ELEVATE MODULAR SHELVING SYSTEM designed by Camilla
Akersveen and Christopher Konings



EXPANDED, CUSTOMISED AND BUILT BY YOU

A new functional addition to the modular Elevate shelving system has been added to our collection. The Elevate system has been extended with a spacious cabinet, side and back panels. Giving you the opportunity to hide away the clutter, divide spaces and lean books against the sides.

Elevate is designed to be assembled with your bare hands. Just stack the shelves, tighten the dowels and elevate the system. Consisting of different shelves and connectors, packed in individual boxes, Elevate allows you to form the exact shelving system you like. Combine the different elements in various ways to make a personalised system. Whether that be a small bedside table, spacious bookshelves or a practical storage solution for office supplies. You set the limits.



DOT PENDANTS designed by Rikke Frost



ELEVATE MODULAR SHELVING SYSTEM designed by Camilla Akersveen and Christopher Konings
CONO TABLE LAMP designed by Benny Frandsen

A Danish
heritage
of timeless,
long-lasting
beauty

Our design philosophy is deeply rooted in our Danish design heritage and tradition of creating long-lasting designs, both in terms of durability and aesthetics. Our approach to achieving this is by using quality materials, incorporating a timeless expression and evoking emotions through our designs.

We strive to merge design with a more responsible mindset by considerate design and material choices. With an aesthetic sustainability approach, our seasonless collection features basic earthy and neutral shades to harmonise with any colour universes, so you do not have to worry about replacing the designs when trends change. Our designs will remain appealing, harmonious and relevant for years to come. Additionally, we offer accessible spare parts and encourage you to take care of the quality materials regularly to prolong the life cycle of the designs.





CONO TABLE LAMP designed by Benny Frandsen
RINA RHINOCEROS designed by Steffen Juul
LEVEL DAYBED designed by MSDS Studio
ARKIV BOOKEND designed by Ella Shegai



ARKIV BOOKEND designed by Ella Shegai

RINA RHINOCEROS and NUNU ELEPHANT designed by Steffen Juul
GHOST TABLE LAMP designed by Studio Kowalewski
ARKIV BOOKEND designed by Ella Shegai
STUDY TABLE LAMP designed by MSDS Studio



KYOTO RUG designed by AD Miller
LEVEL DAYBED designed by MSDS Studio
ANNULAR PENDANT designed by MSDS Studio

PIDESTALL PLANTER designed by Emilie Stahl Carlsen
TRAY SHELVES designed by Hanne Willmann
CONO TABLE LAMP designed by Benny Frandsen
NUNU ELEPHANT designed by Steffen Juul
ARKIV BOOKEND designed by Ella Shegai





PUMP TABLE LAMP designed by KUTARQ Studio
ARRAY LOW SIDEBORD designed by Says Who



PIDESTALL PLANTER designed by Emilie Stahl Carlsen
HIBO HIPPOPOTAMUS designed by Steffen Juul
SENTRUM SIDE TABLE designed by Schmahl+Schnippering
TACT RUG designed by Shazeen Ansari

VIRKA LOW SIDEBORD designed by MOAKK and Røpke Design
PUMP TABLE LAMP designed by KUTARQ Studio
ROMBO RUG designed by Studio MLR





MEADOW LOUNGE CHAIR

Designed by Finn Hvidberg Nielsen

Designed to emulate the feel of walking in a vibrant meadow, the Meadow lounge chair echoes the fine memory of joyful days surrounded by Danish nature and all the associated emotions it conveys. A sense of genuine happiness when you feel the light breeze on your cheeks while picking a spontaneous blend of flowers and grasses. Presence. Equanimity. Recharging. Moods we longingly seek these days.

The Meadow lounge chair carries an embracing and mellow aesthetic. With its wide seat, the design is characterised by amiable organic shapes and curvy lines. Made from high-quality foam, the lounge chair persuasively portrays a solid yet soaring silhouette while it offers a comfortable seating experience. A comfort that is enhanced by its wide seat combined with the lightly swaying metal frame. Constructed to support the movement of the human body.

For short breaks in the everyday life and long comfortable moments with an immersing book.

For individual contemplation as well as reflective conversations with near friends. For calm mornings with a cup of tea and festive celebrations. A lounge chair serves various purposes and situations. Its function reflects the current, surrounding setting, event and mood. However, the low, wide seat and loungy feel will always invite you to lean back and relax for a while.

Designed to be a statement, an eye-catcher and simultaneously offer leisurely comfort, the low lounge chair promises to suit contemporary living with ease. By communicating a strong visual, modern design, that evokes the voluminous, impressive shapes from the iconic design decades, the Meadow chair forms a memorable expression and generous shape that will stay relevant and beautiful for years to come.

The Meadow frame is available in three different finishes; classic black painted steel, modern chrome-plated steel and exclusive brushed stainless steel.





MEADOW LOUNGE CHAIR designed by Finn Hvidberg Nielsen



UTILITY SHELF designed by Rachael Heritage
LUNAR PENDANT designed by Johanna Hartikainen
PIDESTALL PLANTER designed by Emilie Stahl Carlsen



PEDESTAL PLANTERS designed by Emilie Stahl Carlsen



ELEVATE MODULAR SHELVING SYSTEM designed by
Camilla Akersveen and Christopher Konings
STONE PENDANTS designed by Philip Bro
ROMBO RUG designed by Studio MLR



NAKKI 2-SEATER designed by Mika Tolvanen
DUO SIDE TABLE designed by Chifen Cheng
ROMBO RUG designed by Studio MLR





Embracing nature

Embrace the splendour of nature. Longing for the naturalness and authenticity of nature, we seek the experience of a leisurely walk along the beach, a peaceful hike in the forest, or a refreshing dip in the lake. In the slowness of wild nature, we find solace, surrounding ourselves with small, untouched oases. Restoring clarity to your mind. To achieve equanimity, we must get outside and experience the blooming and withering up close. Letting nature inspire us.

In the midst of this, we remind ourselves of the beauty of the materials that occur in nature. Allowing them to be perfectly imperfect. Owing to life in raw nature, the materials' individuality reveals their beauty. From the organic shapes and serene hues found in nature to the diversity of materials. Every grain structure of the oak and walnut material will be one of a kind. Every surface of the travertine and marble stones appears unique as the play of colour will vary. By appreciating the fascinating capabilities of nature, we can unlock endless possibilities for creative inspiration.





Photo by Andreas Dress



KUPPI WALL LAMP designed by Mika Tolvanen



NAKKI LOBBY MODULES designed by Mika Tolvanen
NAKKI LOBBY TABLE designed by Mika Tolvanen

CONO FLOOR LAMP designed by Benny Frandsen
ARRAY HIGHBOARD designed by Says Who
LA TERRA COFFEE TABLE designed by Agnes Morguet
TACT RUG designed by Shazeen Ansari
COLLAR SOFA designed by Meike Harde





WALLIE WALL DRAWER designed by Amalie Skov Rahbæk

ROMBO RUG designed by Studio MLR

CONO FLOOR LAMP designed by Benny Frandsen

NAKKI OTTOMAN, 2-SEATER and ARMCHAIR designed by Mika Tolvanen

SOROUND TABLES designed by NUR Design

SENTRUM SIDE TABLE designed by Schmahlt+Schnippering



A Space to Unwind and Connect

The living room is the heart of the home, a place to unwind and escape from the complexities of the world. It provides a versatile setting for both social activities with friends and family, as well as solitary contemplation in the company of a book or your favourite series, all while nestled in the deep seat of the sofa.

Characterised by cushioned furniture and tactile materials that invite touch and exploration, the living room is adorned with natural marble stones, thick hand-tufted wool rugs and knobby bouclé fabric. These materials contribute to creating a space that you will enjoy spending time in, from calm mornings with a cup of coffee to ceremonial celebrations.





NAKKI LOBBY MODULES designed by Mika Tolvanen
CONO WALL LAMPS designed by Benny Frandsen



NAKKI LOBBY MODULES designed by Mika Tolvanen



GAP PENDANTS designed by NUR Design

ARC COFFEE TABLE designed by Ditte Vad and Julie Begtrup
CONO FLOOR LAMP designed by Benny Frandsen
FLORA SOFA MIDDLE MODULE designed by Yonoh
TINT RUG designed by Shazeen Ansari





FLORA MODULAR SOFA designed by Yonoh
SOROUND COFFEE TABLES designed by NUR Design



MODERN FUNCTIONALLY

We pursue to define the function of each room to convey the desired moods and fulfil essential activities. Each room should facilitate respective everyday situations and basic needs, whether that be inspiring personal development and creativity, allowing tranquillity and contemplation, or encouraging productivity and conversations.

Simultaneously, we actively seek to create versatile rooms that consist of multifunctional furniture and accessories, capable of serving various purposes and being easily rearranged as needs change. We allow ourselves to demand more from the things we adore and surround ourselves with. A modular sofa, a portable lamp, or a small bedside table that is easily transformed into an extra coffee table or an extensible shelving system designed to be adapted to different situations.

The idea of creating designs that not only take up space but also give space back. Whether that be the hidden storage space in the ARC tables, the integrated room in the Sentrum side table or the clever combination of a shelf and drawer of Wallie. Their multifunctional characteristics make them ideal for small spots. Intended for small living.

At WOUD, we place a high emphasis on adding value to our designs on multiple levels. We constantly seek hidden features in form, function, and material to add a multifunctional dimension to our designs. This approach is integral to our design language and a vital feature that we cannot deviate from.



KYOTO RUG - designed by AD Miller
COLLAR SOFA - designed by Meike Harde
ARC COFFEE TABLES - designed by Ditte Vad and Julie Begtrup

KNAEGT COAT RACK designed by Rikke Palmerston
NAKKI BENCH designed by Mika Tolvanen
KYOTO RUG designed by AD Miller





ARRAY SIDEBOARD designed by Says Who

SEATING



PAUSE dining chairs
Oak, oiled oak w/ leather seat and black w/ leather seat



SOMA dining chairs
Oak, black, oiled oak, oiled oak w/ leather seat and black w/ leather seat



MONO dining chair
Oak



FRAME dining chairs
Beige and black

NEW



SLALOM step stool
Oak



MONO bar & counter
Oak and black



LEVEL daybeds
Available in leathers and bouclé fabrics with an oak or black painted oak frame



LEAN lounge chair
Ivory



MEADOW lounge chairs
Chrome plated, black painted and brushed stainless steel frame. Available in predefined price groups

STORAGE and SHELVING



ARRAY cabinets
Five sizes - available in walnut veneer, white pigmented oak veneer and black painted oak veneer





VIRKA high sideboards
Available in black/oak, black, oak and walnut/black



VIRKA low sideboards
Available in black/oak, black, oak and walnut/black



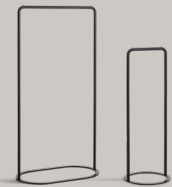
TÖJBOX wardrobes
Two sizes - oak and black



TRAY shelves
Two sizes - mix oak, black and walnut
trays



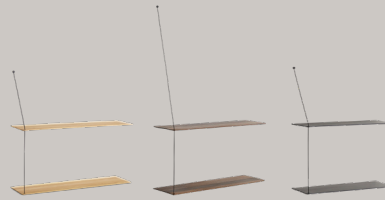
ELEVATE modular shelving system
Available in oak and black.
Panels and cabinets available



O&O racks
Two sizes



Utility shelves
Oak and dusty green



Stedge shelves
Two sizes - oak, smoked oak and black



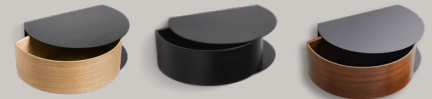
INPUT organiser
Solid oak



KNAEGT coat racks
Oak and black



HOOP racks
Oak and black



WALLIE wall drawers
Oak, black and walnut



BRICKS modular storage system
Different cubes for wall-mounting and the floor - oak and black
RFID lock system available by request



TABLES



TREE dining tables
Three sizes - black/black, beige/black and beige/beige



TREE console tables
Two heights - beige, green and black

NEW



LUDO dining table
White pigmented oak and walnut



SENTRUM side tables
Warm grey, dusty green, taupe, burnt orange and black



LA TERRA occasional tables
Three sizes - grey melange and ivory



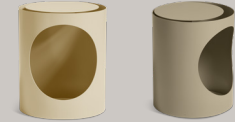
DUO side table
Black painted metal



SOROUND occasional tables
Three heights and three diameters - concrete, black painted ash, beige and black laminate



VERDE coffee tables
Black and brown marble



TABL side tables
Ivory and grey beige



ARC side and coffee tables
Three sizes - white pigmented ash, black, oiled oak, walnut and white pigmented lacquered oak

SOFA SERIES



NAKKI sofas
Armchair, 1-seater, 2-seaters, 3-seater, ottomans and benches



NAKKI LOBBY modules
Modules: Corner, 1-seater, chaise longues, ottoman and table



COLLAR modular sofa
2-seater, 2.5-seater, 3-seater, open-ends and ottoman



FLORA modular sofa
Modules: Middles, pouf, corner and cushion

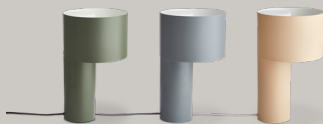
LIGHTING



PUMP table lamp
Black w/ opal glass



GHOST lamps
Floor and table



TANGENT table lamps
Forest green, cool grey and desert sand



CONO table lamps
Black and satin



STUDY table lamp
White painted metal



DEW table/wall lamps
Oak and black w/ opal glass



KUPPI wall lamps
Mustard yellow and black



CONO wall lamps
Satin and black



CONO floor lamps
Satin and black



MERCURY wall lamp
Black painted metal



PUMP pendant
Black w/ opal glass



LUNAR pendant
Black w/ opal glass



GHOST pendants
Two sizes - opal glass



ANNULAR pendants
Two sizes - white, black and beige



STONE pendants
Black, white and mustard yellow, taupe, satin, dusty rose and mint painted metal

CONO pendants
Two sizes - black



GAP pendants
Three sizes - black



DOT pendants
Three sizes - satin w/ smoked glass and black w/ opal glass

ACCESSORIES



WOODEN ANIMALS
Three sizes



BOOKND bookends
Black, brown and green marble



ARKIV bookend
Concrete



MOUNTAIN objects
Light grey travertine



JEU DE DÈS candle holders
Black, brown and green marble



MONOLITH incense holder
Light brown marble



MIRROR barb
Solid oak



EILEEN hook
Black



HAAK hooks
Dark grey and black



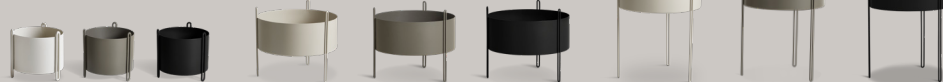
AROUND wall hangers
Two sizes - oak, walnut, black with black or satin brass hook



TAIL WING hooks
Two sizes - oak



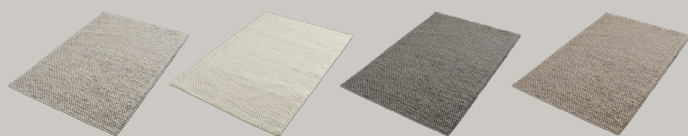
ILLUSION hangers
Black ABS plastic



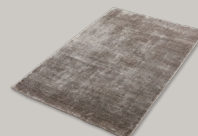
PIDESTALL planters
Three sizes - grey, taupe and black

TEXTILES

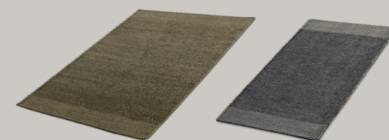
NEW COLOURS



TACT rugs
Three sizes - dark grey, off white, anthracite and brown

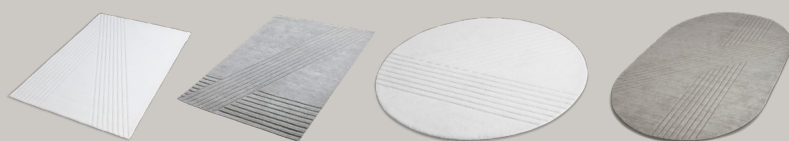


TINT rugs
Three sizes - beige



ROMBO rugs
Three sizes - moss green and grey

NEW SHAPES



KYOTO rugs
Rectangular (four sizes), oval and round (two sizes) - grey and off white



DOUBLE throws
Beige/off white and light grey/dark grey



MEADOW LOUNGE CHAIRS designed by Finn Hvidberg Nielsen

WOUD

HEAD OFFICE

WOUD A/S
Søndergårdsalle 9MF
8700 Horsens
Denmark

wouddesign.com

CONTACT US AT

+45 71 998 998
info@woud.dk

Find your local sales contact at
www.wouddesign.com/contact

GET INSPIRED

INSTAGRAM
[@wouddesign](#)

FACEBOOK
WOUD

LINKEDIN
WOUD

PINTEREST
WOUD

DOWNLOADS

Download all our high resolution packshots and lifestyle photos, product files and 2D and 3D files at woud.presscloud.com. Here you can also access our 3D warehouse.